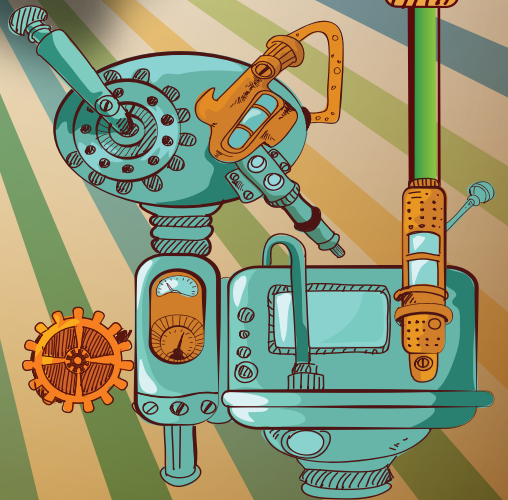




TGI
Grupo Energía Bogotá





La Magia es Energía



TGI
Grupo Energía Bogotá

Watuja wekaa o>ou süpula>a
kepiaajirain waya>a
suma>a tü süütpaa
tü supana>ajaka>a kas

Principios de sana convivencia
con el gasoducto





TGI
Grupo Energía Bogotá

waya sulujejana wane michi mulou shi shikisuka tu sujotojule tu caska ya woumainpa Colombia.

ayatahiwaya suka anakalakuipa sopuna tu maa epunale waltuin suluje tu michi mulouka.

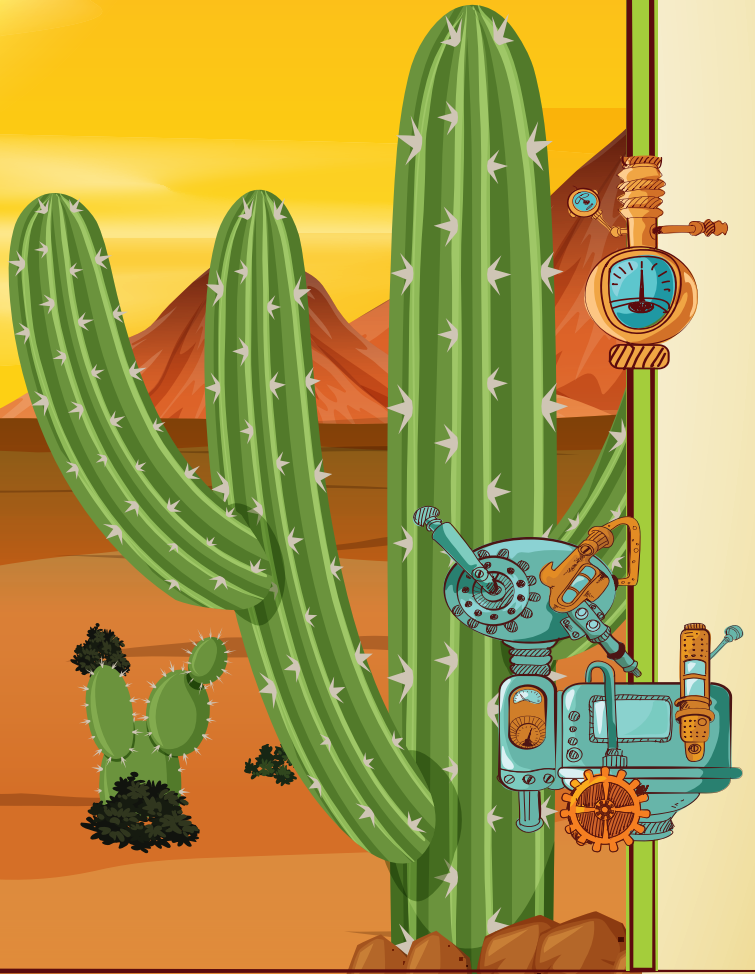
Esuu tu ayoujirrawa sunain jee koujen sutma tu ayatasuka wamaa, naouniruin suka tu tecnología suamaka alijuna, supula shiajjatuin yaletuin suküipa , jee anainjatuin tu ayatawaka otaa anaijatuin shia namuin na weikajaka amuin shia.

Tgi shikajawalin tu caskat soulumuin tu shipiaka alijuna suchikijee tiaa tu caskat , eitajuanusu sulupuna tu sujoojia ka casuu sulumuin shipiaalu tu aliajuana, tu industria sumaka aliajuana, jee tu comercio munaka otaa waneirua ya san tu redes domiciliaria sumaka aliajuana.



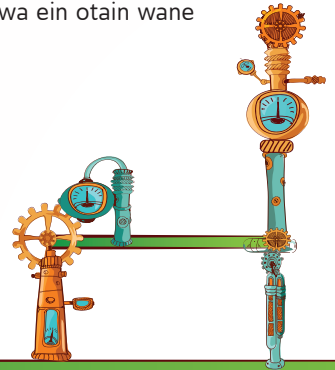
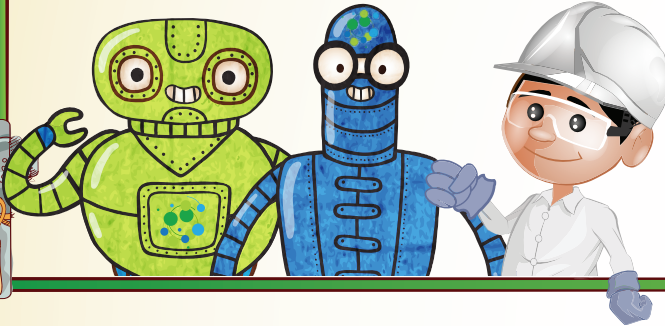
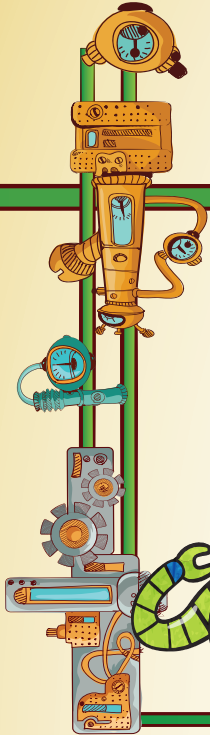
TGI S.A. E.S.P.

Wale>ekai, ni wairu>u Tanulia metanito ,tamushi jia supulaa jirrajuin tu sainraaka tgi s.a e.s.p supulaa watujainjatuin sou jamuin jatuin wakuai pa sulatule wane kasaa ya sulu tu sujotoleka casu.



Atujanekaa

Supulapuna takujain jumuin tu suchikumajatka tu pauatas de convivencia suumaak alijuna supula , analuinjatuin wain kapia satou tu sujotojuleka kasu , takujauin pa muin tu epunakalu suma tu nojoluwa ein otain wane casaa sumanaka TGI.



Eimolojo>o

kasa ainjuka wajuna sutuma wayuu, supula sutain wane mala>a ujulut, numuin waneshi wayuu o wapushuwaa, es supulaa sukunjain suleruujee maa,, shinaluje palaa, sukutkajale maakat, tu fenómeno natural sumaka alijuna.

sujotoojule>e
tu casuskat.



shia soule uchii wepia,
sujunujalee tu lpacaa
otaa tu uchikat.



shia skutunujalee
suleruujee maa.



● Esuu tu nojolee sawanauin
supula sukuijuin shia tu
aliajuanaka eree shia ujuin.

● Tu akunjasukat suleruujee
maa, palaa,sikutunajalee
mapaakat.



katchinrre joutaika,
ejalee wale>e.



Ñoule tu wuinka ,
tu inundación sumaka alijuna.

Jolee wai supulaa wanee kasaa

Jole>e waya supulaa: es jole wayaa suka pejerre wayuu suanain tu sujsotojuleka kasu, esu supula amulolin wakuipaa.



Pejere>e wepia sunain suchii, otaa soule shia uchii.



Nojorlee werajuin tu kasaa pejejeka wanin.

Jamushi wayaa joko supula wane kasaa.

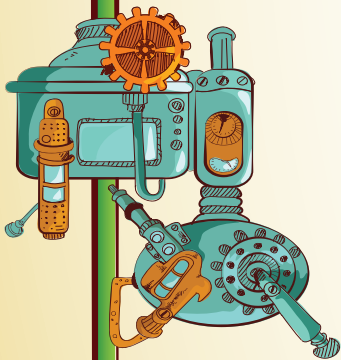
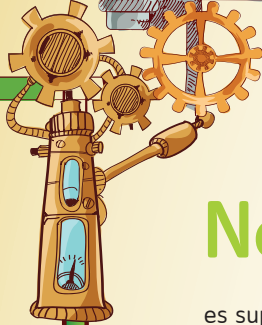
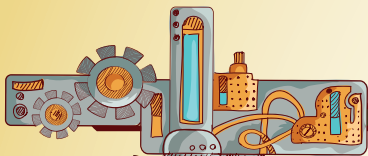


Ajatule shionojunule tü wunupanaka.



Wojotule erutsuu shirroku tu shikika.

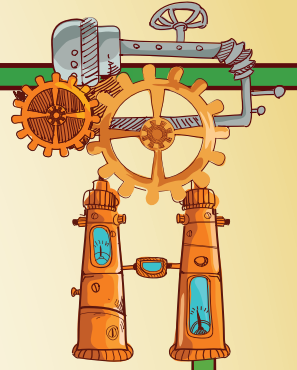
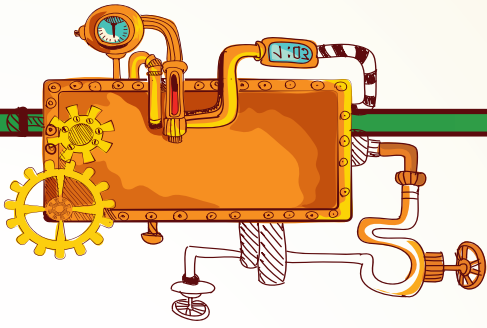




Nojoliiree waimajuin

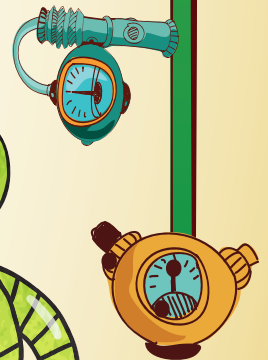
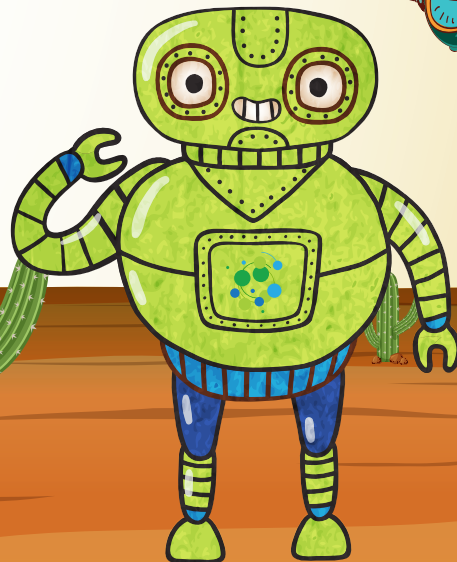
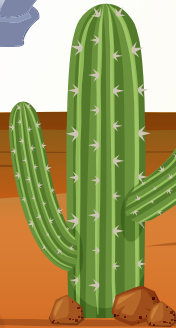
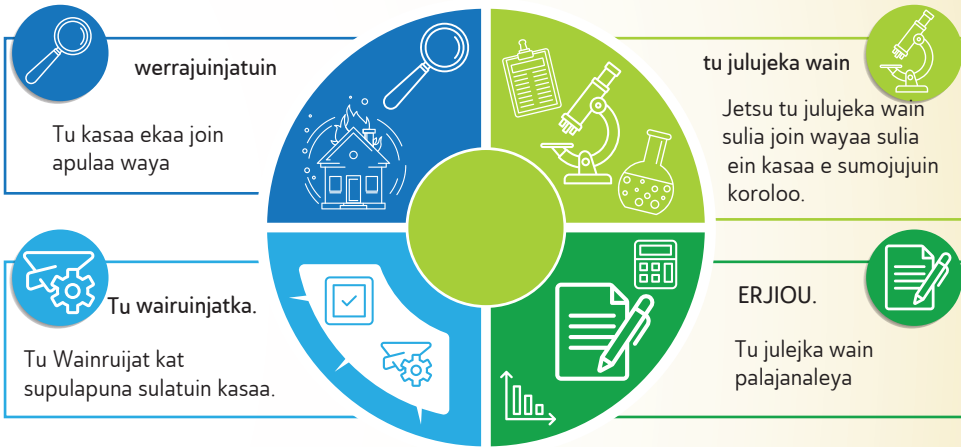
es supula susotoin maka nojolule sukunjunuin tu tuberi sumaka alijauna epuanale sujotojuin tu kaskat.

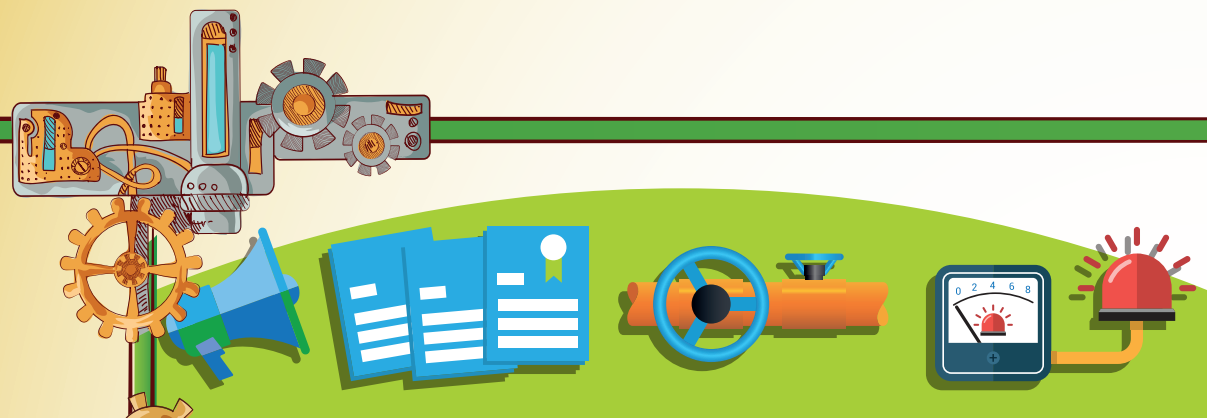




Nojluiwa ein alatuin casaa unjulut.

Nojoliiree waimajuin; es supula susotoin maka nojolule sukunjuuin tu tuberi sumaka alijauna epuanale sujotojuin tu kaskat.





Watu jain sou sukuipaa shiatai tgi , sulia alatuin wanee kasaa ya suluu shiatain.

Ayatashii supula anianjatuin tu wairaka sulu tu ayatagaka.

Esuu tu política sumaka alijuna supula julujain wain tu ayatawaka.

Soukualusu watuma tu karalotaluka otaa tu karralotaluka cha watapuna supula anain tu ayatawaka.

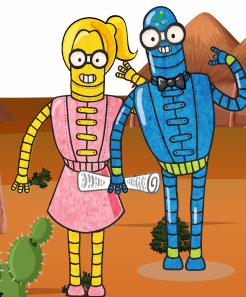
Esu tu wopuu supunaka kasu tu susanajiaka tu válvula sumaka alijuna.

Es sumanaa tu ayatawaka suma tu kaska wanee supljat ematuin ewetuin shuchikumajatu maka eree kasle alatuin watapunaa shawalerramatuin. Shia tu scada sumaka alijuna.

Wakunjuin ota musia, werajiru in tu suliajata nojolin kasain alaatuin.

Esu sumana tu ayatawaka, sujuitamatu in suchikumajatu eree sujunajale tu kaska, tu erujunusu ouluu, shia tu monitoreo sumaka alijuna.

Ekirajashi wanepia sunain natujainjanain nakuaipa eree kasa alatakaa suluu tu ayatawaka.



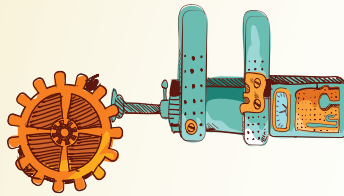
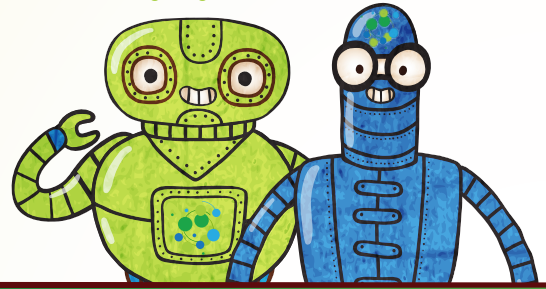


Jirajutpain suküipa tu ayatawaka
supula nojolin jatuin sulatuin wane
kasaa , wakujain palaa jumuin tu
julujeka wain, anakajaa wakujai
jumuin tu wainpalainjatka, tu
wapulain otaa waneiruaa supulaa
wekiraalain suma kepian wayaa
pejein sunain tu sujotojuleka kas.



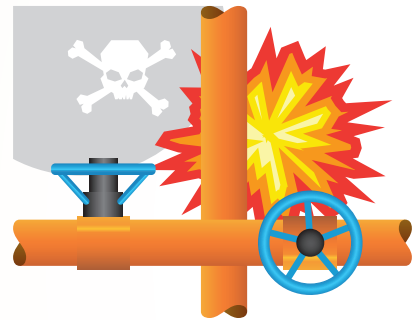
Jamus sain jumuin supulaa ein Sulatuin wanee casaa ya sulu tu sujtojoole tu kas-

tu kachuwerra eree shiatanaama>a tu sujotojuleka kas , es supula sutain wanee kasaa mojusuu sunain muin tu wepiapaa shia julujeka wain tu:



Sainrulee shia ekaii watalujutuin woulia

Sumauraale shia wayuu e>e kayatajejatuin e>e sumajein wayaa o shialee sumajein tu ayatawaka.



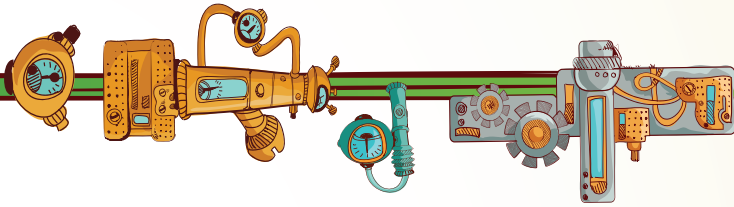
Akunjasuin supunaje ma>a

Akunjasuin supunajee ma>a , sunain mapaaka makaa tu sukutkajalee tu ma>a, sukutunajalee tu uchi>i , ñoulee tu suchii shikerojalee wepialumuin.



Sumojujalee sujapulujee tu alijuna akunjusukat shia

Sutalee sumojujalee tu shiatayaka sunainje shiatain tu alijunaka.



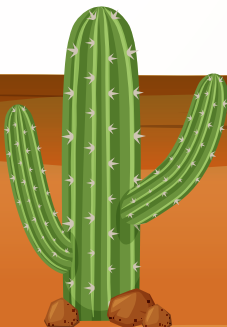
Wane kasaa ekaai ein ujuin wamuin wapushuwa

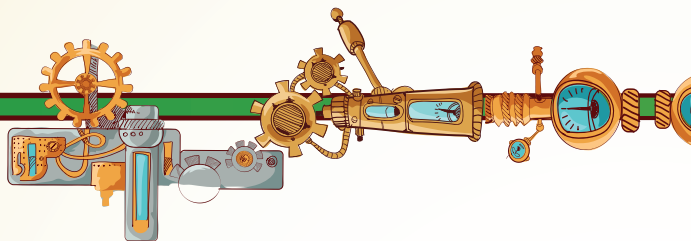
Einjana waya sunain wanepiaa , supula wawaluin supula sunakuinjatuin tu alijunaka tu shiatainka, supula shitnuinjatuin,

Nojorlee wakujamatuin sulupuna tu kachuwerra sunin ein wanee kasaa mujulut , otakaa ya woumainpaa,sunainje shiatain tu alaijunaka.

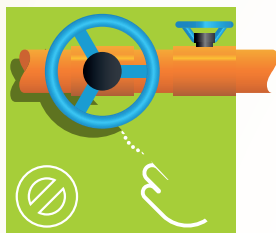
Makaa walijirulee supalaa shiatain tu unjukat sunain tu cahuwaerra epunalee sujotojuin tu kaskat.

Nojorulee weitain supulajatu einjatuin jalapunain sujutayain eree kasaa alatakaa , tu emergja sumaka alijuna.





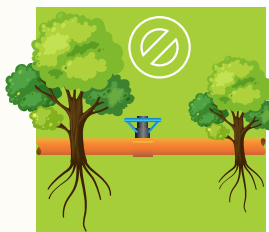
Tu kasaa Kapulainjatka Watumaa



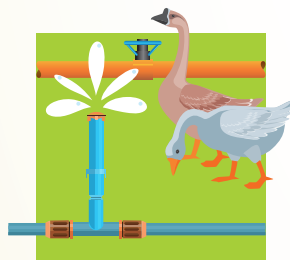
Nojoluin jat weitain
wajapuu sunain
shiatain tu kachuweraa
susanaajiaka tu kas.
gestión del riesgo,



Nojoluin jat weitain
kasaa sunainje tu
sujotojulee ka kas.

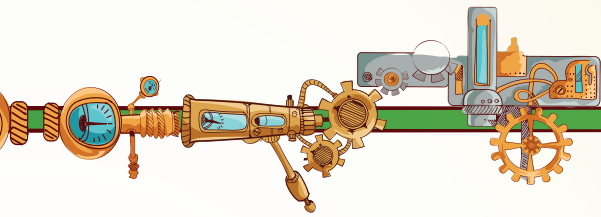


Nojoleshi wayaa
apunajeein sopuna tu
supunaka tu
sujotojuleka kas.



Nojoleshii waya
apujanjen otaa musia
supulajan wuin,
sotpunaa jee sopunaa
tu kachuweraka
epunalee sujotojuin tu
kaska.





Nojoleshi waya apotuín sopuna, otaa pejepuna sunain tu sujotojule kas , makaa einjatuín wayataín pejee sunain sujotojuín tu kaska.

Nojotsuu ewein pejee sunaun kasaa ekai susoton, nojotsu epejunein likii peje sunain tu spunaka kas.



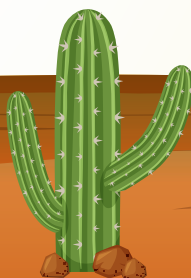
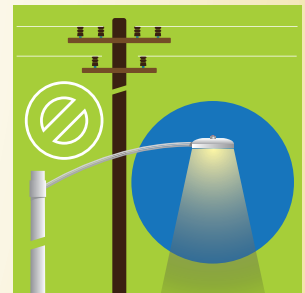
Nojotsu alaatein ejetuu o ejetuu ekai jawatuín sopuna tu wopuka epunalee sujotojuín tu kaska.

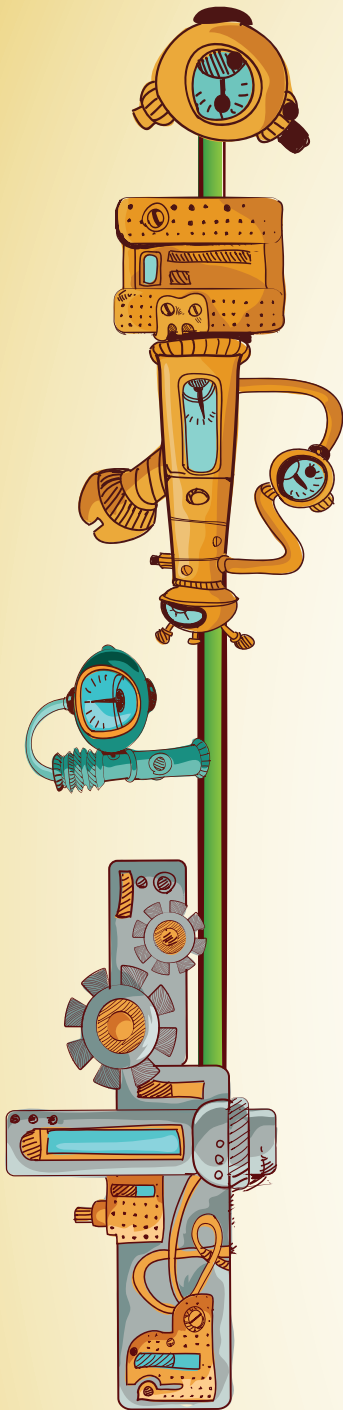


No waireen wepia sopuna , la>a, nojleshi waya apotuín, ojuulee ,sou tu supunaka tu sujotojuleka kas.

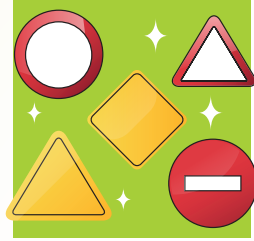


Nojotsu eitanen tu suika lusaa, tu cable eléctrico sumaka alijuna, epunalee sulatuín tu kas.





Waimajeen sukuaiipa otaa shia kajutesuu watumaa tu ashajunaka eree einjatuin wain sulia tu supunaka kas.



Nojotshu eitanen pejepuna supulajana kasaa ekai join supula asotowaa, makaa tu tapalulaa, mushaishaa



Wajapuluwesu tu eree ein tu kit sumakaa alijunaa, kamaa sutaale wanee kasaa, susotolee epunale tu supulajanaka kas.



Ewesuu wanepiaa epunain sujotojuin wayuu makaa eree sutain kasaa makaa tu susotolee tu epunale sulaa tuin tu kas.



Sutalee wane kasaa makaa tu susotolee , cheksu shiain julujain wain tu sumakaa tu aliajunakaa ekirrajasuka sunain tu ayatawaaka.



Tu wajutpalakaa epunalewa yaa

Juljesu wain tu putchika, supulaa ein wain sulia sulatuin wanee unjulut macaa sain susotolee tu , epunalee sulatuin tu kas.

Juljesuu wain wapajeen suchikamajat makaa shewalee , tu kachuwerra epunalee sujotojuin tu kas, supulaa ein wain wayaakana kepiashikana sunapunaa.

Anesuu janee watumaa ,waimajeen, kajutesu wamuin su shiatain tu aliajunaka, sukaa sulatuin tu wepiapa>a suliaa ein sutain wane>e kasaa sunainje>e, supula>a anain tu ayatanaka>amaa

Ewashii wayaa sunain tu outkajawa, shenakulee wayaa tu aliajuana sunain apajaa tu putchii, asouteshi wayaayasan , suka kepiajirain wayaa suma tu raa kaska,

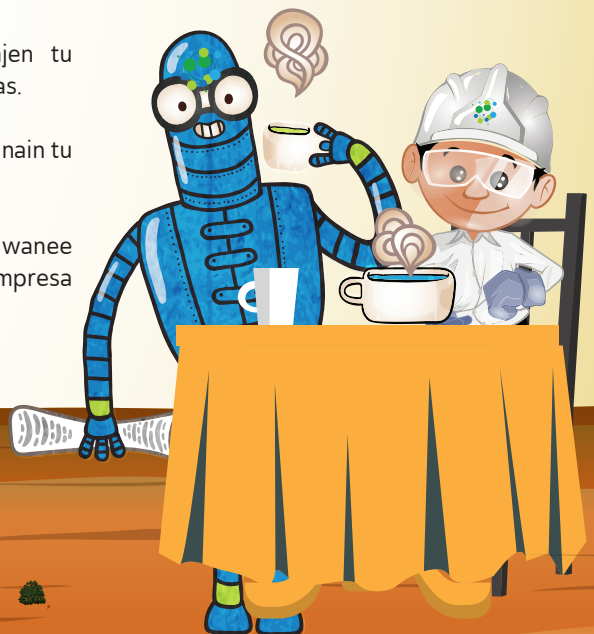
Aneshii ewesuu tu kajautujirain wayaa , jimatuinjatuin waya otaa tu anain jatuin tu mapakat eree wayaa jutkatuin.

uljesuu wain suntulee tu alijunaa atujasukat supulee wanee kasaa sutalee akalijuinjatka wayaa makaa sutalee wanee kasaa.

Weraajein tu ekaa suluu karalouta , shirrajen tu wayuuka kepiajuskaa suutpuna tu supunakaa kas.

Eitaneshii wanee wayuu, ekai tutuin nusotuin sunain tu alijunaka ayatawakaa.

Yoteshii sukaa anakat akuaipaa, nuchuntapaa wanee kasaa sumuin tu aliajunaka ayatsuka suluu tu empresa sumaka alijuna.





Kasaa wairuinjatka sutalee wanee casaa ya suluu tu supunaka kas.



Julujukawain katuin jatuin wo>ou wapushuwa, akoleeshi wayaa wataluu suliaa tu supunka kas.



Asurutnesuu tu sojotojiaka kas eree shia wepialuu, wayakujawen tu waseema, suliaa suwatuin shimechee, suliaa shipejalajuin tu epunalee salatuin tu kas.



Akujeshii wayaa sumuin tu shikisuka tu ayatawaka TGI, kasain tu otakaa sasuluu tu wouminka.

shianjatu wenakamaataka aluu tu , maliaasat.

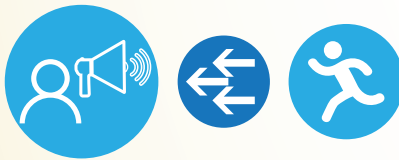
01-8000-517-220



Apinamatesuu tu wayuu ekai pejein sunain otaa ekai sotpain wopuka epunale tu salatuin tu kas.



Akujunesu sumuin tu alijunaka supuyaka tu akalijakaa wayuu, tu laulapaikat. CMGRD.otaa tu makaa anuliaa sutumaa alijunaa.



Juluwesu wain tu putchikaa sumaka tu alijuna akalijusuka wayaa.



Ayakalain jana wayaa suliaa tu eree sutain tu kasaa ekaa makaa tu susotolee, jotulee, wateshi waya suliaa.

Julujeka wain makaa werulee shia suluu puna tu supunkaa kas.

Makaa pirrullee ein tu wachuntetka muin supulaa ein pain, sulia ejuin sulatuin wanee kasaa.

Julujaa paain tu



Shialeralee sutoloin shirroku wuin , ee pejein sunain tu supunaka sulatia tu kas.



Eree susemaa jotuin.



Shishatalee tu kachuwerra epunalee sujotojuin kaska.



Anopalee tu tuwakaa iepunalee sujotojuin tu kaska.



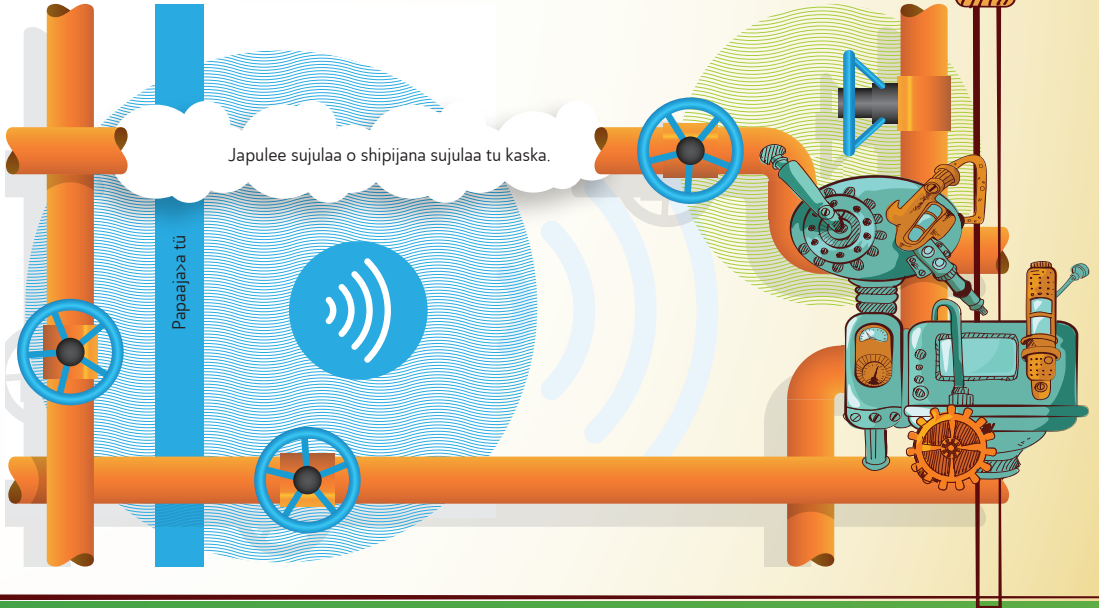
Shialeraale maa sutumaa sutchin tu kaska.



Makaa waruule, kasaa pejepunain, supunaluu tu sujotojulee tu kas.

Japulee sujulaa o shipijana sujulaa tu kaska.

Papaajaa tu



kapulajatka

Supula coujein tu putchi ekat suluu karalouta tu ley 1523 de 2012 sumaka alijuna jee tu decreto 2157 nou chi juya 2017, je tu putchi sulu tu putchi mulousuka ya woumaipa Colombia su pula kapulajanain shia , akunjushi waya tu plan de gestión del riesgo sumaka alijuna supula kasalee otain sululu tu wayata kala anain tu sujotojiaka casu. Supulajat tu wayaltaka anain makaa eree wane otakaa ya sulu tu wayataleka, makaa tu susotolee, supula wakujain shia jumuin jutujaiwasou suka pejein shia ya suluu jumainpa>a.

Wakuinjaka tu karaloutaka namuin na wayuu ya kana pejein nepia su nain tu sujotojuleka casu.

Tu karaloutaka supulajat watujain supule wain , makaa sutalee wanee tu emergencia sumaka alijuna, supulajat einjatuin wukuipa maluu sopulapuna ein wane alataka.

¡Julujapain!

Eree sutalee wanee kasaa sumuin tu suunaka sujotojia kas, apitnesuu tu supuyaka tu ayatawaka TGI S.A E.S.P, tu akalirajwaika wayuu kasaale sutain o suluu tu kachuweraa maliipalaka. 123



TGI
Grupo Energía Bogotá

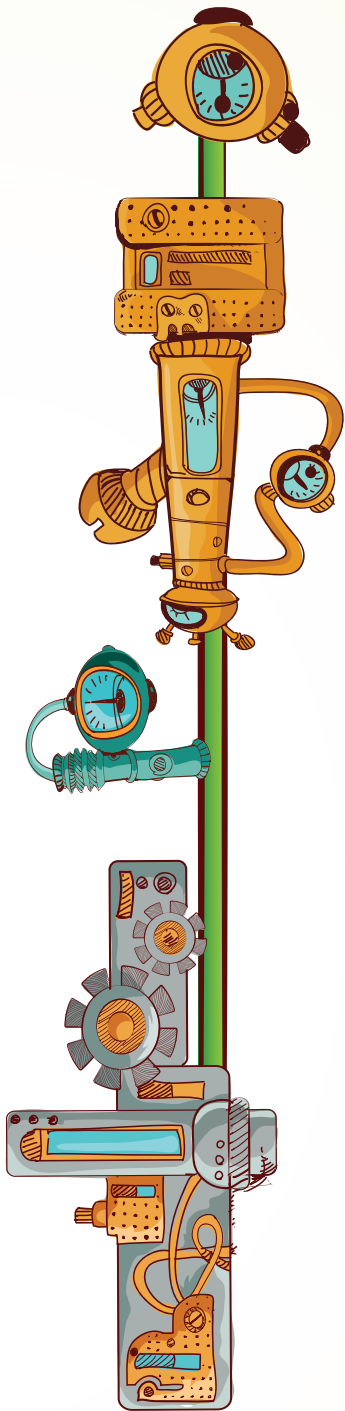


Kachuweraa maliasat sutumaa TGI S.A E.S.P.

01-8000-517-220

Akujeshii wayaa sumuin tu shikisuka tu ayatawaka TGI, kasain tu otakaa sasululu tu woumainka.





Sukuipaa suluu karralouta

Eimolojo>> kasa ainjuka wajuna sutuma wayuu, supula sutain wane mala>a unjulut, numuin waneshi o wapushuwaa, wayuu, es supulaa sukunjain suleruuje maa, tu fenómeno natural sumaka alijuna..

Tu wainruijatka: soukuluwein wtuma tu kasaa, anainjatuin, sului ejuin wane mala>a su nainjee

Apulaain: ein tu wapulain su tumaa tu choujaka wamuin jee katchin wain sulia join wayaa supula aliajuna.

Supuna tu sujotojulekat kasu: epunaleee sujotunuin tu supulajanaka sujotujelaka kasu, supa wat kai sukujunuin otaa shijepenajuin sutuma tu alijuanaka.

Kasu mapujejatka shirokujejat palakat: sutchinsu , supula epejia, susemas shia ´ , sunain mapujejatuin shia, shi alanaka tu metano sumaka alijauna sunain.

Kachuwerra epunale sutchin tu sujotujuin kas wuatapuana.

Ainaka no joluin sulatuin wane kasa: suliajat ein wane mala maka tu , susotole , shewaale, tu sujotojiaka kasu.

Kachuwerra mulouyu epunale shitanuin tu sutchinpalaka tu kasukat: shi tu epunale sujotujuin tu kasukat , supula sulujunuin watamuin atumawa, shi tu supunaka t maa otaa tu kachuwerra mulouyukat.

Nojoliiree waimajuin: es supula susotoin maka nojolule sukununuin tu tuberi sumaka alijauna epunale sujotujuin tu kaskat.

Jole>e waya supulaa: es jole wayaa suka pejerre wayuu suanain tu sulsotojuleka kasu, esu supula amulolin wakuipaa.



Julujesuu wain , tu kas walatirawaikaa, mejusat shiaa.

